



Formed in 1871, Cooper & Co. were Scotland's leading grocers. The building here at 499 Great Western Road was built in 1886. Can you spot the intricate decorations on the pillars? Cooper & Co. was closed in the 1980s. The building is now in use as a pub.

#### COOPER & CO. 499 GREAT WESTERN ROAD



Charles Hepburn and Herbert Ross established Red Hackle Whisky in 1920. The whisky was named after the red feather worn in the cap of soldiers of the Black Watch during World War One and many of those who worked in the building were ex-servicemen. Part of the building is one of the few examples left of Victorian warehouses. The building is now in use as a carpet showroom and a music shop. 39 Orago Street was owned by a joiner, William McLintock, in the early 1900s and is still occupied today.

#### RED HACKLE WHISKY 61 OTAGO STREET



The Bank Store is one of our best-preserved Ghost Signs, but not much can be found about behind the Ghost Signs. We don't just rely on historic records. Sometimes it is the stories people share that help us in finding out what a Laundrette, but a fire left the building badly damaged. It is now home to a Design store.

#### BANKSTORE PROVISIONS 45 BANK STREET



Opened in 1896 as a cafe/ice cream parlour, it is still a firm favourite today. Housed in a class C building the exterior wall shows the cafe painted on the stone. The cafe is one of very few places to use traditional ice cutting techniques where each ice cube is produced in house, the way they used to in the 1930s using ice blocks and saws! A handy tool should 'The Beast From the East' ever return.

#### KELVINGROVE CAFE 161 ARGYLE STREET



This corner bar took on the name when its current owners found the fabulous Ghost Sign. Could this sign be a good starting point for a Ghost Sign pub crawl?

#### THE CRESCENT 1102-1106 ARGYLE STREET



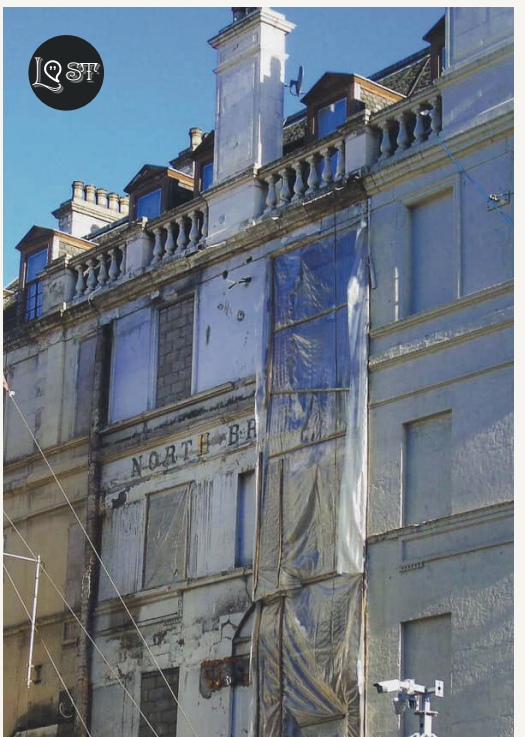
The Crescent dates back to 1882 and was previously a wine and spirit merchant owned by Archibald Cameron.



John and George Curdie first set up their family business in 1860 and moved from Kilmarnock to Partick. John's grandson became a member of the Master Painters Association, clearly following in the family footsteps. **DID YOU KNOW** 4 generations of the Curdie family and it went on to trade for 120 years?

#### JOHN CURDIE & SONS 3 STEWARTVILLE STREET

## LOST & FOUND



The mysterious, transient nature of Ghost Signs means they often disappear and reappear. A Ghost Sign might be lost forever if the sign has been painted over or physically removed, but on occasion they disappear to magically reappear years later, for example when a building is under renovation.

The North British Station Hotel sign spotted at Queen Street railway station during the renovation in 2019 is an example of this, as it appeared just for a few months before quickly being hidden again from view.

#### CAN'T FIND A GHOST SIGN?

Use the black sticker to mark on your map where a Ghost Sign is no longer visible.

#### FOUND A GHOST SIGN?

Use the golden sticker to mark a new Ghost Sign not yet marked on your map.

## THE WEST END

The West End is often defined by its most famous landmarks such as the University of Glasgow and Kelvingrove Park. However, this is simplifying a large and diverse area.

The West End boasts some of the best food and drink establishments in the city, with so many big-hitters in Finnieston alone. The West End's park scene goes unparalleled, with stunning views from Kelvingrove park

and the exotic plants found in the Botanic Gardens. There is plenty of charm to be found in the West End from its nooks, such as the Hidden Lane, to its crannies, such as Ashton Lane. The West End has lots of museums to spend the 170 rainy days of the year, including the famous Kelvingrove Museum and Mackintosh House.

## WHO WE ARE

Ghost Signs of Glasgow is a volunteer-based project which tracks down, researches and archives fast-disappearing signs around the city. The project naturally found its home in Glasgow City Heritage Trust, as Ghost Signs are vital to the fabric of Glasgow's urban landscape.

**A GHOST SIGN** is a fading sign that represents a business or establishment that no longer exists. We have been building an archive that will help us better understand Glasgow's economic and cultural history. One fundamental goal of the project is to be able to learn about the architectural, social, economic and cultural atmosphere of 'the Glasgow' to which these signs belong and share it with you! We have developed tours to showcase the fascinating stories we have unearthed and currently have tours spanning the city, with walks covering the West End, the East End and the City Centre. These walks have been a learning experience for both the Ghost Signs team and the walkers.

The project works in collaboration with Glasgow's local communities who often contribute memories of their much-loved locales. We have a wide social media presence using our Twitter, Facebook and Instagram to further connect with the Glaswegian community. All the material on this map, including research text, drawings, photographs and graphic design, has been a collaborative effort by our wonderful team of volunteers.



@ghostsignsgla

**TAG US IN YOUR PICTURE  
BE A GOOD GHOST SIGN BUSTER!**  
#ghostsignsgla  
@ghostsignsgla

**FOLLOW OUR ONLINE ARCHIVE  
ON FLICKR**  
Ghost Signs of Glasgow

**WANT TO BECOME A VOLUNTEER?**  
Drop us an e-mail at  
ghostsigns@glasgowheritage.org.uk

**KEEP AN EYE ON OUR SOCIAL MEDIA  
FOR TOURS AND TALKS!**



**GHOST SIGNS**  
of Glasgow